



Rabbit anti Cytokeratin-19 (CK-19) Polyclonal Antibody

Alternative Name(s): CK19; Keratin 19; 40-kDa keratin intermediate filament

Order Information

- **Description:** Cytokeratin-19 (CK-19)
- **Catalogue:** 602-670
- **Lot:** See label
- **Size:** 100ug/200ul
- **Host:** Rabbit
- **Clone:** nan
- **Application:** IHC(P), WB
- **Reactivity:** Hu, Ms, Rt, Bv

ANTIGEN PREPARATION

A synthetic peptide corresponding to the N-terminus of human Cytokeratin protein.

BACKGROUND

Cytokeratin-19 is one member of the type A (acidic) subfamily of low molecular weight keratins. The keratins are intermediate filament proteins responsible for the structural integrity of epithelial cells and are subdivided into cytokeratins and hair keratins. The type I (A) cytokeratins consist of acidic proteins which are arranged in pairs of heterotypic keratin chains. Unlike its related family members, this smallest known acidic cytokeratin is not paired with a basic cytokeratin in epithelial cells. It is specifically expressed in the periderm, the transiently superficial layer that envelopes the developing epidermis. Keratin 19 is not expressed in hepatocytes, therefore, antibody to keratin 19 is useful in the identification of liver metastasis. The degree of keratin 19 staining in breast cancer distinguishes malignant from benign tumors. Keratin 19 is often co-expressed with keratin 7.

PURIFICATION

The Rabbit IgG is purified by Epitope Affinity Purification

FORMULATION

This affinity purified antibody is supplied in sterile Phosphatebuffered saline (pH7.2) containing antibody stabilizer

SPECIFICITY

This antibody only recognizes ~40 kDa of human Cytokeratin-19. It also reacts with mouse CK-19 protein. The other species are not tested.

STORAGE

The antibodies are stable for 24 months from date of receipt when stored at -20oC to -70oC. The antibodies can be stored at 2oC-8oC for three month without detectable loss of activity. Avoid repeated freezing-thawing cycles.

APPLICATIONS/SUGGESTED WORKING DILUTIONS*

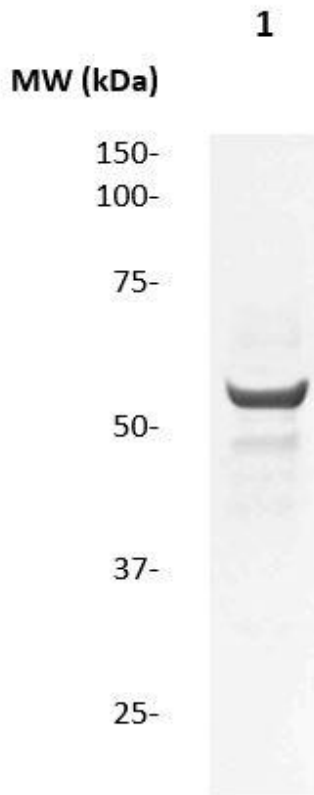
- Western Blot: 0.1-1 µg/ml
- ELISA: 0.01-0.1 µg/ml
- Immunoprecipitation: 2-5 µg/ml
- IHC: 2-10 µg/ml
- Flow cytometry: Not tested
- Molecular Weight: 51.3
- Positive Control: Kidney Tissue
- Cellular Location: Cell Membrane

*Optimal dilutions should be determined by researchers for the specific applications.

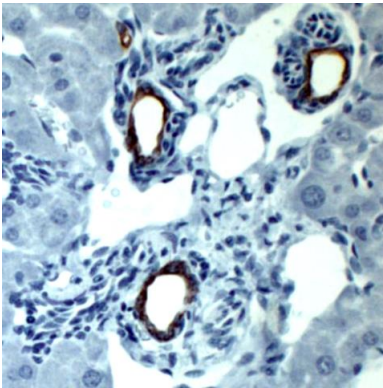
FOR RESEARCH USE ONLY.

AbboMax, Inc 2528 Qume Drive, Suite 8, San Jose, California 95131, USA
1 408-573-1898 (Tel). 1 408-573-1858 (Fax). www.abbomax.com info@abbomax.com

DATA ATTACHMENTS



Western Blot: The whole cell lysate derived from SKBR-3 was immunoprobed by Rabbit anti-CK-19 (Cat#602-670) at 1:500. An immunoreactive band is observed around ~40kDa.



Immunohistochemistry: Mouse liver (FFPE) was stained with Anti-CK-19 antibody, (Cat# 602-670) at 1:500 for 10 min @ RT. Staining of formalin-fixed tissue requires boiling tissue sections in 10 mM Citrate Buffer, pH 6.0 for 10 min followed by cooling at RT for 20 min.

REFERENCES

FOR RESEARCH USE ONLY.